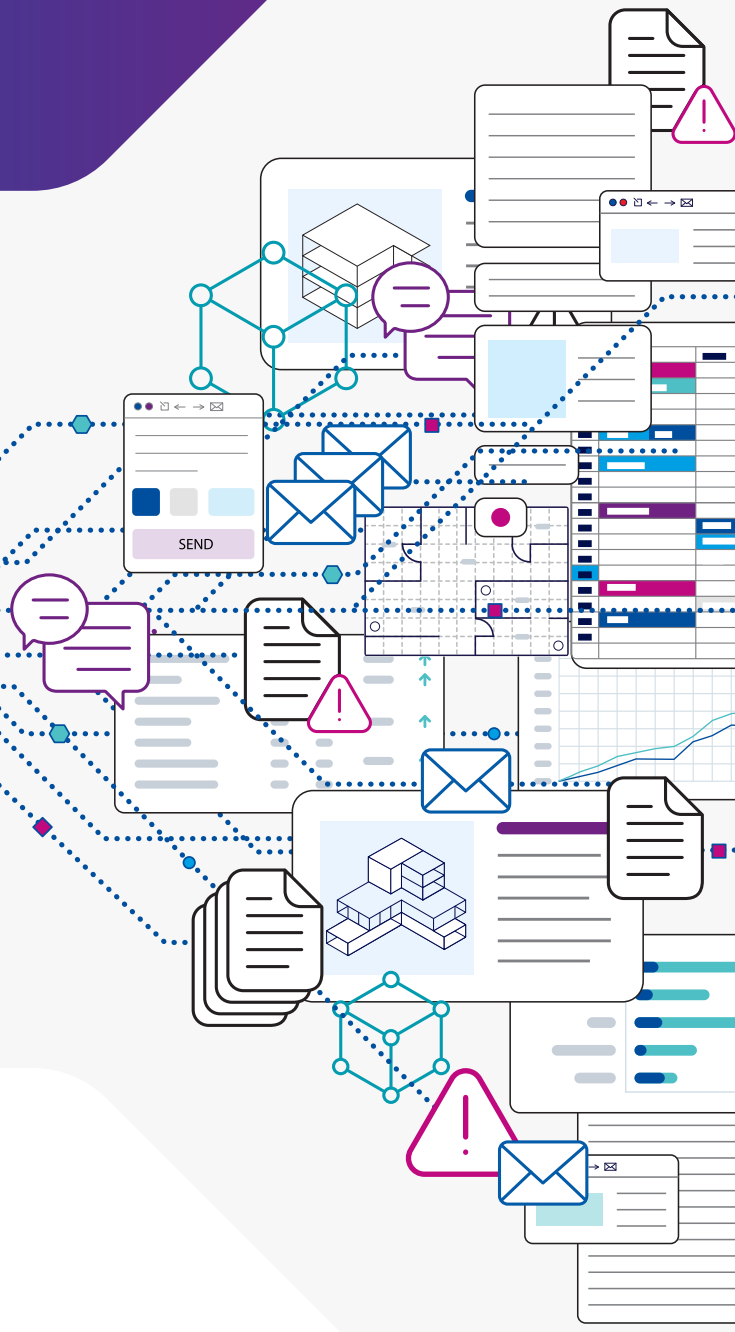




NEWFORMA
KONEKT



Newforma: The Single View of Truth



Table of Contents

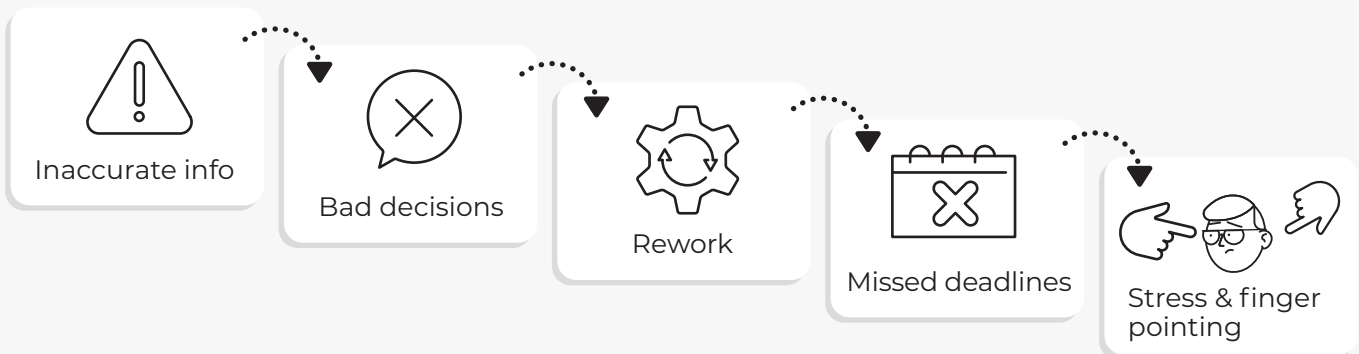
- 3 **Newforma: The Single View of Truth**
- 4 **Why CDE Tools Often Fall Short**
- 5 **Newforma's Approach: Connect the Ecosystem**
- 7 **Newforma Konekt Search**
- 8 **Why Customers Love a Single-View of Truth**
- 9 **One Truth, Without the Push**

Newforma: The Single View of Truth

How often do you catch yourself thinking, “I’ve seen that information before, but I can’t remember where”?

That line comes up nearly every week from project teams. And it’s more than a passing frustration, retracing through chats, emails, drives, and cloud folders can burn half a morning just hunting for details you know exist.

When that happens, it doesn’t just slow people down. It creates real project risk: delays, rework, RFIs that multiply, consultants waiting on answers, field crews stuck without the information they need, and owners who lose confidence in the team’s control of the process. The cascade is familiar: inaccurate information leads to bad decisions, bad decisions lead to rework, and rework leads to missed deadlines and then the stress and finger-pointing begin.



Why CDE Tools Often Fall Short

CDEs are usually sold as the clean fix for project chaos: one platform where everything is supposed to live, so everyone always knows what's current. In theory, that creates a “single view of truth” and eliminates the daily scramble to find information.

In practice, most CDE strategies fail for a simple reason: they try to change human behavior more than they change the information problem. Projects generate decisions and documentation across many systems, just like email, file servers, cloud drives, BIM tools, and field platforms, and teams are under constant pressure. When the “truth” depends on everyone remembering to feed one system perfectly, gaps form quickly. Those gaps then turn into delays, rework, and uncertainty right when teams need confidence.



They depend on perfect compliance. A CDE only becomes “the truth” if everyone uploads, files, tags, and updates content consistently. Real projects are too fast and too human for that to hold day after day.



They're incomplete by default. Critical information still originates and lives in Outlook, chats, desktops, shared drives, BIM tools, and field apps. If the CDE isn't automatically pulling that in, gaps are inevitable.



They add another destination - and more admin. Instead of reducing fragmentation, a CDE often introduces duplicate effort, like saving files twice, re-uploading revisions, and maintaining folder structures, on top of the work people already have to do.



They slow teams down under pressure. When schedules tighten, people choose the fastest path—emailing an attachment, texting a screenshot, sharing a quick link—rather than following a rigid CDE workflow. The system gets bypassed precisely when accuracy matters most.



External partner adoption is uneven. A CDE only works if every stakeholder, like GCs, architects, consultants, subs, owners, uses it the same way. In reality, each party has different tools, habits, and tolerance for process change, so participation varies and the “truth” fragments again.



Governance and permissions get complex fast. Cross-company access, audit needs, changing team members, and phase-based restrictions can create heavy administration. If permissions are too tight it's hard to use; if too loose it's hard to trust.



They become one more silo to check. Over time, teams end up asking, “Is it in the CDE or in email or on the drive?” Instead of a definitive truth, the CDE becomes another location in the scavenger hunt.

Ideal CDE



vs

Real Project



Newforma's Approach: Connect the Ecosystem

It's worth calling out a key distinction: competitors try to force a single view of truth by asking everyone to move everything into their system.

Newforma Konekt, Newforma's cloud-based, SaaS platform, integrates with tools teams already use (like Outlook, network drives, cloud storage, BIM platforms, and field tools) and pulls that information together into a connected project record with no extra steps required.

Newforma Konekt becomes a single view of truth by connecting the sources you already trust and use; then unifying and indexing them so the project record is complete.

But the real breakthrough isn't just aggregation. It's what happens next: Newforma Konekt makes that connected record usable at speed.

Newforma Konekt supports multiple types of integrations, each solving a different kind of fragmentation:

1

Communication & Email

Microsoft Outlook is still where a huge portion of project direction, approvals, and "the actual decision" lives. Newforma Konekt's Outlook integration brings structure to that reality by enabling central project email capture and filing, so critical correspondence doesn't stay trapped in inboxes or personal folders.

Why it matters: when email is connected into the project record, teams can find not only the file; but the why, the who, and the when behind it.

2

Construction management system

Tools like Procore are essential on many projects, but they can also become another silo when teams have to manually recreate or re-upload the same information elsewhere. Newforma Konekt's Procore integration helps teams avoid data duplication by connecting those records into the broader Newforma project view.

Why it matters: instead of "Which system has the latest?" teams get one place to search and validate what's current, without re-entering information.



3

BIM & Models

Project truth increasingly lives inside models. Newforma Konekt integrates into model environments such as Revit and coordination tools like Navisworks, so model-based information is part of the same connected project story as the emails, RFIs, and supporting documents around it.

Why it matters: teams can put model context beside project communication and documentation, instead of treating BIM as an isolated universe.

4

Document Management

Many teams already standardized around a CDE like Autodesk Docs. Rather than forcing a rip-and-replace, Newforma Konekt connects to it, so the documents stored there are accessible as part of the broader project record and discoverable through one search experience.

Why it matters: you don't create a new "truth destination." You make the existing one easier to access, validate, and connect to everything else.

5

Storage & infrastructure integrations

A huge amount of project history still lives in firm-controlled storage. Newforma Konekt connects to systems like:

- Azure (cloud storage / identity-backed access)
- Panzura (hybrid cloud file services that sits between users and cloud/object storage)
- Nasuni (cloud file services built on object storage, used to centralize and distribute file access)
- Autodesk Docs
- SharePoint
- File servers (traditional on-prem project directories via a file server connector)

**Connect the ecosystem.
One project record.
No extra steps.**



Communication & Email



Construction Management System



BIM & Models



Document Management



Storage & Infrastructure Integrations



Newforma Konekt Search

But connecting all this information is a little useless if you aren't able to maneuver within it at lightning speed in order to find what you need exactly when you need it.

Here comes the true power of a single view of truth.

If the biggest daily pain is "I know it exists, I just can't find it," then the solution lives or dies on search.

Newforma Konekt is purpose-built to find project information across the entire connected ecosystem, not just one folder, not just one platform, not just what someone remembered to upload. It's the difference between "everything is stored somewhere" and "anyone can retrieve the right thing in seconds."

Konekt search drives three outcomes that matter on real projects:

1 Speed under pressure

When a PM needs an answer for an owner call, or a superintendent needs the latest response on site, Newforma Konekt reduces the search from minutes (or hours) down to seconds. Instead of digging through email threads and directories, teams can jump straight to what's relevant.

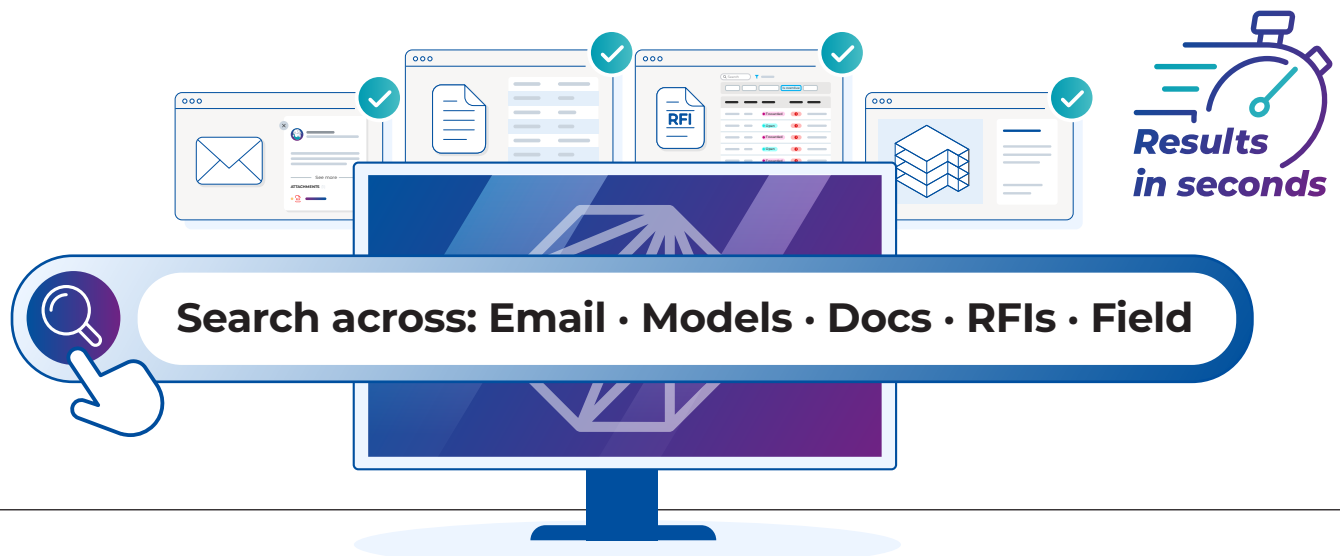
2 Confidence in what's current

"Found it" isn't enough. Teams need to know they found the right version. Newforma Konekt search is powerful because it surfaces information with the surrounding project context, helping teams validate recency and relevance rather than relying on guesswork and file-name roulette.

3 Context, not just content

Project truth is rarely contained in a single file. It's in the chain of decisions: the email where it was discussed, the markup that clarified it, the attachment that changed, the follow-up thread that resolved it. Newforma Konekt helps teams find the record **and** the story around it, so decisions are made from complete information, not fragments.

In short: Newforma gives you a single view of truth. Newforma Konekt makes it instantly retrievable.

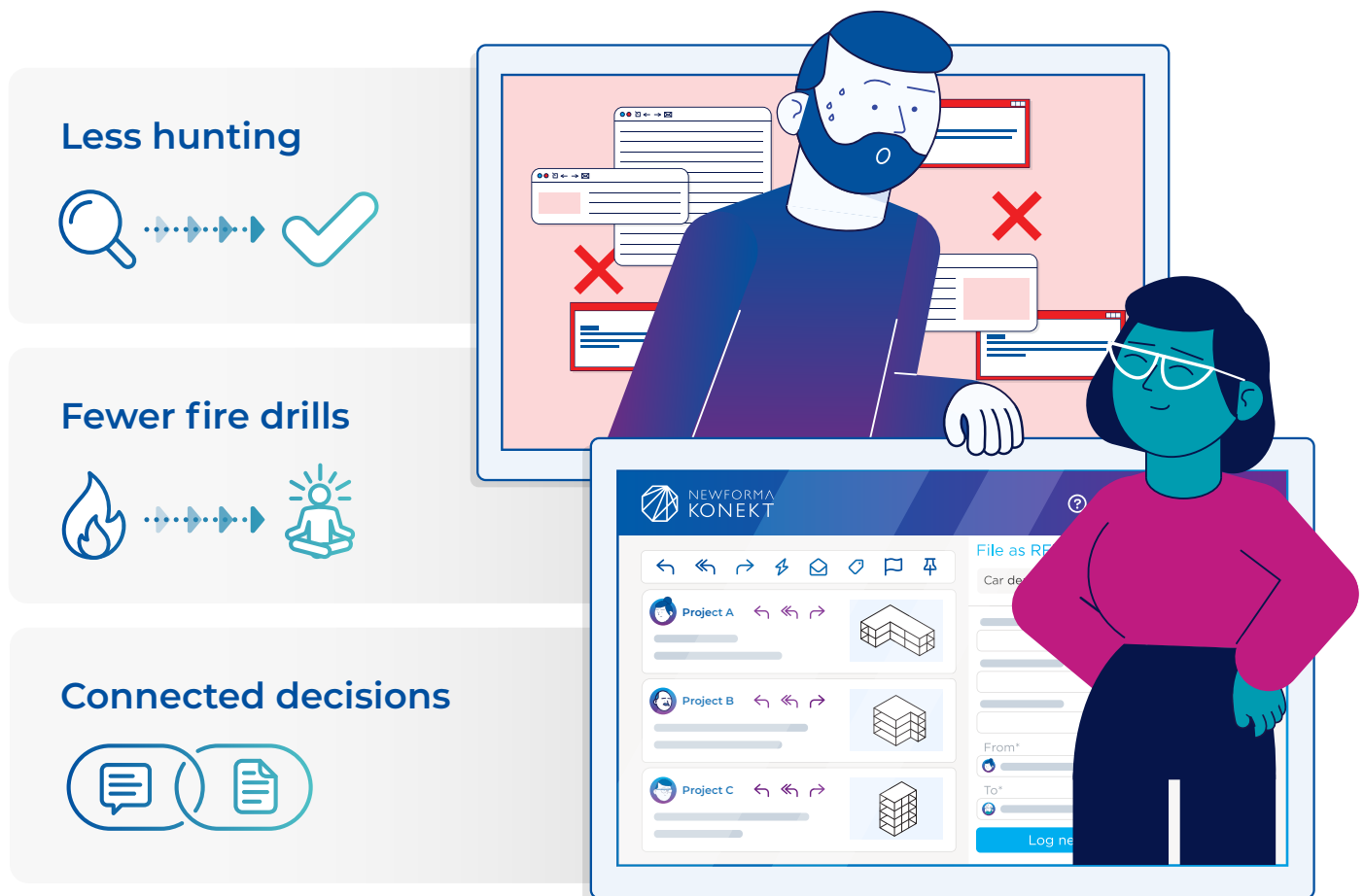


Why Customers Love a Single-View of Truth

Customers don't just describe features—they describe relief.

They love having one hub to access project information without hunting across email chains, network drives, and cloud silos. They talk about search that actually works, because it replaces the daily “I swear I saw that somewhere” problem with fast retrieval and confidence. They value how Newforma connects the dots, linking conversations and files so you don't just see a document, but also the decision trail around it.

Most of all, they describe the relief of eliminating information black holes: the “I swear I saw that somewhere” problem. And they talk about fewer fire drills, because when pressure is high and answers are needed fast, the information is already there and organized and connected.



One Truth, Without the Push

The industry keeps trying to manufacture a “single view of truth” by introducing a CDE and asking everyone to change behavior: upload everything there, follow that process, and remember to keep it current. But projects don’t run on perfect compliance. They run on deadlines, interruptions, field conditions, and information flying between email, files, models, and construction systems.

Newforma takes a more realistic, and ultimately more reliable, approach. By integrating with the tools teams already use (Outlook, Procore, Revit/Navisworks, Autodesk Docs, Azure, and file servers), Newforma Konekt connects the ecosystem into a unified project record without creating duplicate work or new failure points.

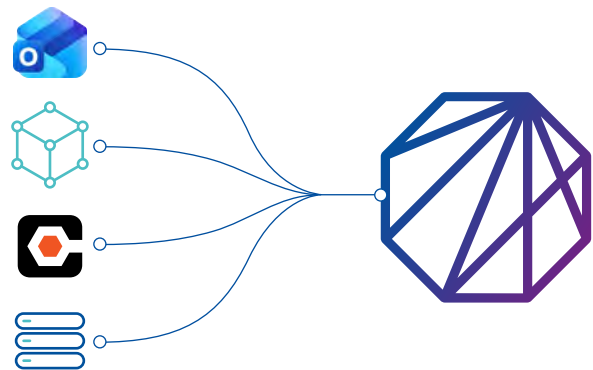
And because a “record” doesn’t matter if you can’t retrieve it quickly, Newforma Konekt’s search is what makes the single view of truth operational; finding the right document, the right decision trail, and the right context in seconds, even under pressure.

So instead of a CDE that depends on people remembering to feed it, Newforma delivers one connected truth across the systems you already trust; made instantly findable through Newforma Konekt.

CDE only approach



Newforma approach



One connected truth across the systems you already trust.



NEWFORMA
KONEKT